



Platform.

aspect 



Platform table and leaner.

A versatile new table design by Aspect, Platform can be customised to suit the personality of your space.

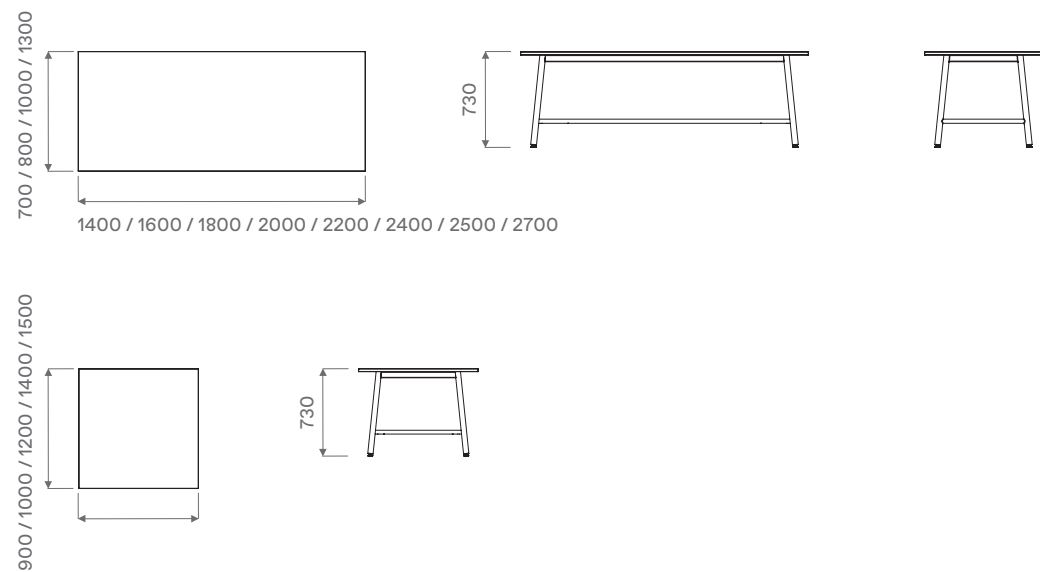


The Platform system boasts a casual yet refined profile that lends itself to a multitude of styles and spaces.

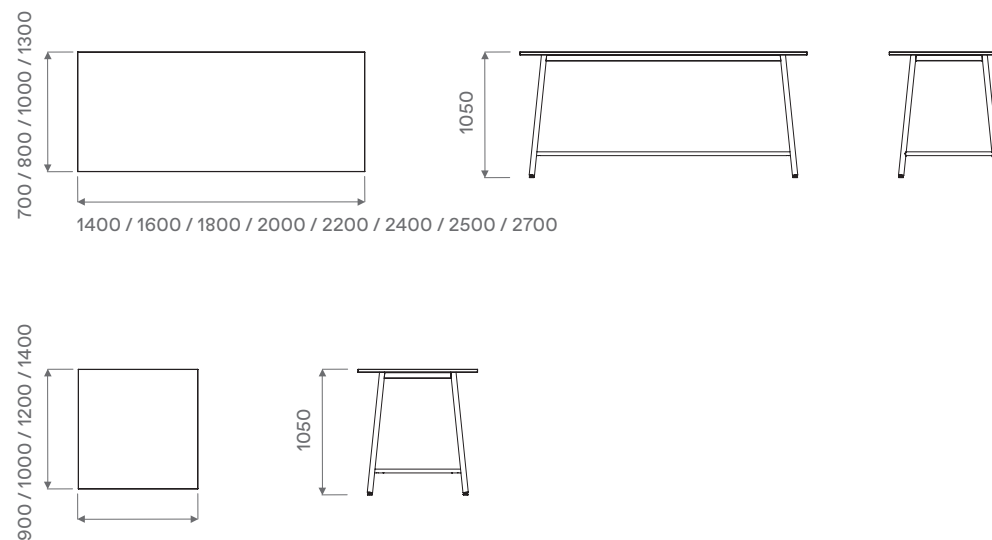
With its slim, angular design, Platform tables are ideal for any meeting or break-out setting.

Platform is available in both table and leaner heights, and can be powdercoated in any colour. Mix and match the top and base finishes of your Platform table to complement your stools, chairs and decor accents.

Table



Leaner



**Relaxed,
informal
and
effortlessly
stylish.**



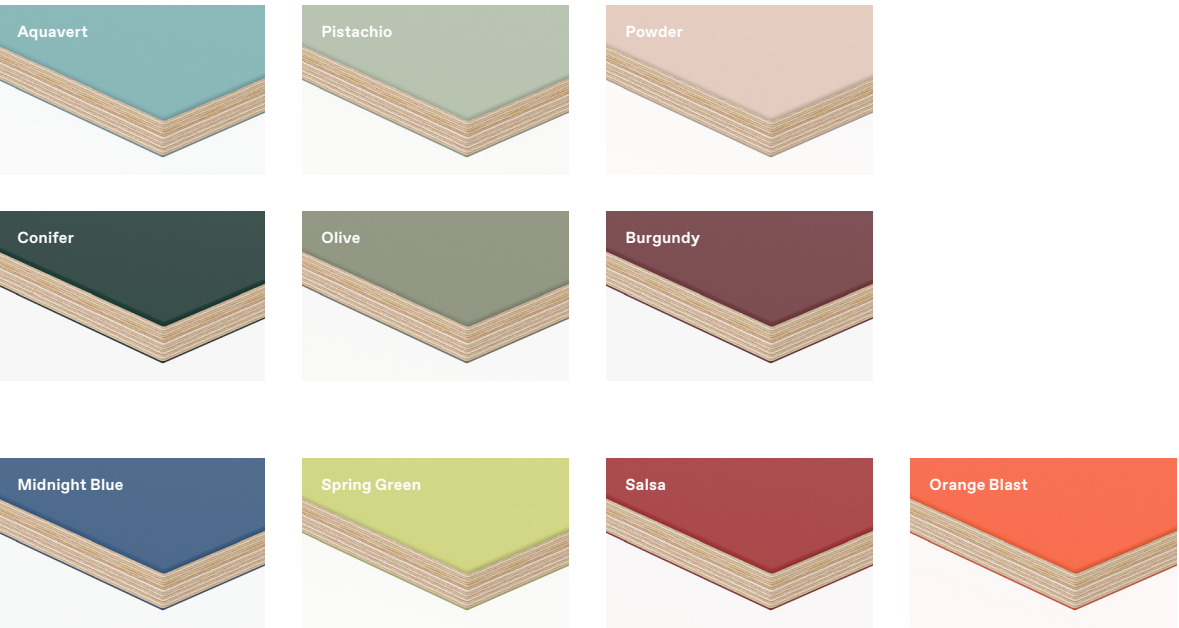
Tabletop finishes

Choose from our wide array of standard finishes. Custom finishes are available on request.

Laminate finishes



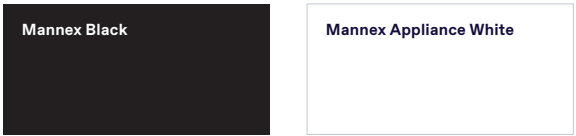
Linoleum finishes



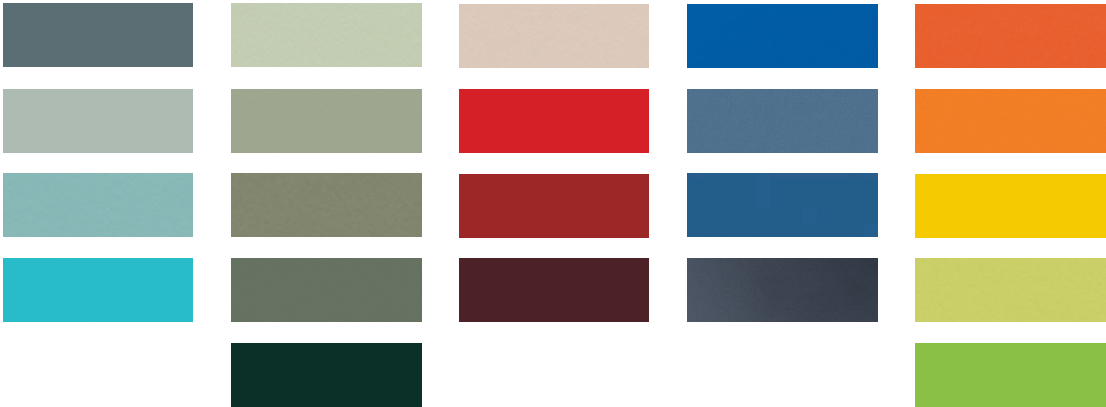
Customise your Platform table to complement your seating and decor accents.

Sub-frame finishes

Powdercoat finishes are offered in a range of colours which can be customised to complement or match the tabletop.



Custom powdercoat colours



We believe that high-performing spaces enable high-performing people.

We place a person's comfort and ease-of-use at the heart of every product and system we create. Aspect designers and workplace specialists help you create a complete office furniture solution that will inspire and support people in their work every day.

Back in 1982, from a small factory in Auckland, Aspect founder and CEO Richard Simmons made his very first furniture prototypes. Driven by a passion for craft and beautiful engineering, he steadily grew the business and is joined today by his three sons and an expert team of designers, engineers and workplace specialists across New Zealand and Australia. Today, Aspect makes collections at the leading edge of international product design, technology, and workplace best practice.

Our focus on crafted, fully resolved commercial furniture means Aspect collections are trusted by some of the largest public and private organisations around Australasia. With nearly 40 years' experience designing and manufacturing collections for the modern workplace, our office furniture has a reputation for being robust, ergonomic, and comfortable throughout the working day.

We make over 70 per cent of our product range in New Zealand and Australia for true control over design, quality, customisation, and lead times. You receive products quickly and reliably from a quality-assured environment. In addition

to speed and flexibility, local manufacturing also creates a smaller environmental footprint.

Our team of product designers and workplace specialists help you define and select a furniture solution to meet your workplace aspirations and project budget using durable and environmentally sound products.

Direct access to our furniture designers means greater flexibility and control over your solution, as we work from our collections, adapt existing products, or design new components.

Aspect Furniture operates ethical and sustainable business practices. We have certification from Good Environmental Choice Australia (GECA) and Environmental Choice New Zealand (ECNZ), and our products are aligned to the Green Star rating tool. Independent certifiers regularly audit our premises under the ISO 9001 and ISO 14001 quality and environmental management systems. Similarly, the health and safety of our employees is vital to our success, and we are certified to the globally recognised AS/NZS 4801 and ISO 45001 occupational health and safety standards.



Furniture, Fittings
and Flooring
Licence Number
3210076





Showrooms

Sydney
Melbourne
Canberra
Auckland
Wellington
Christchurch

Australia

1800 696 334
infoau@aspectfurniture.com

New Zealand

0800 323 220
info@aspectfurniture.com

aspectfurniture.com

