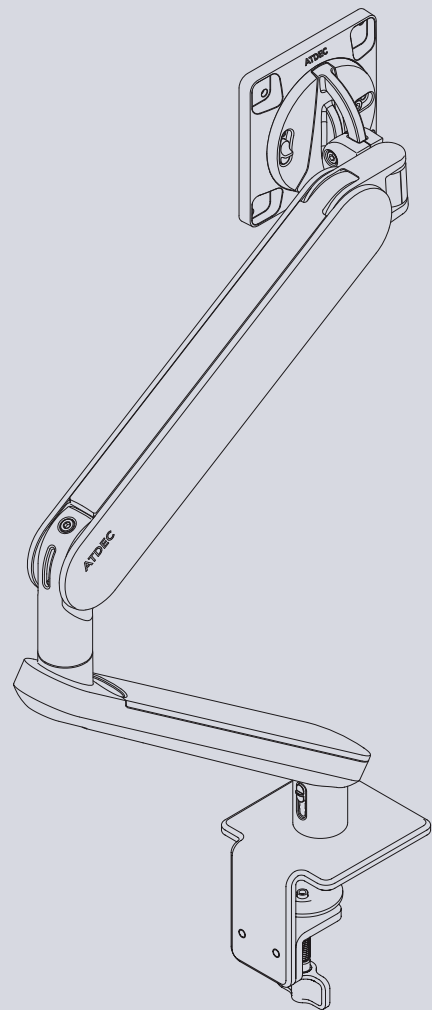




Atdec Ora Specification Sheet.





An ergonomic mount with a minimal aesthetic suited to most workspace needs.

Ora's strength and balance translates into smooth functionality with effortless fingertip adjustments that deliver ergonomic excellence.

A low-footprint body that is compatible with single, curved or flat displays, Ora's discreet profile complements contemporary workspaces and is fast and easy to install.

A complete mounting solution – arm, clamp and setup tool in one box. Adjustable from portrait to landscape, Ora moves for you.

Product specifications.

An Aspect product.
Designed by Atdec.

Finishes Black, silver or white

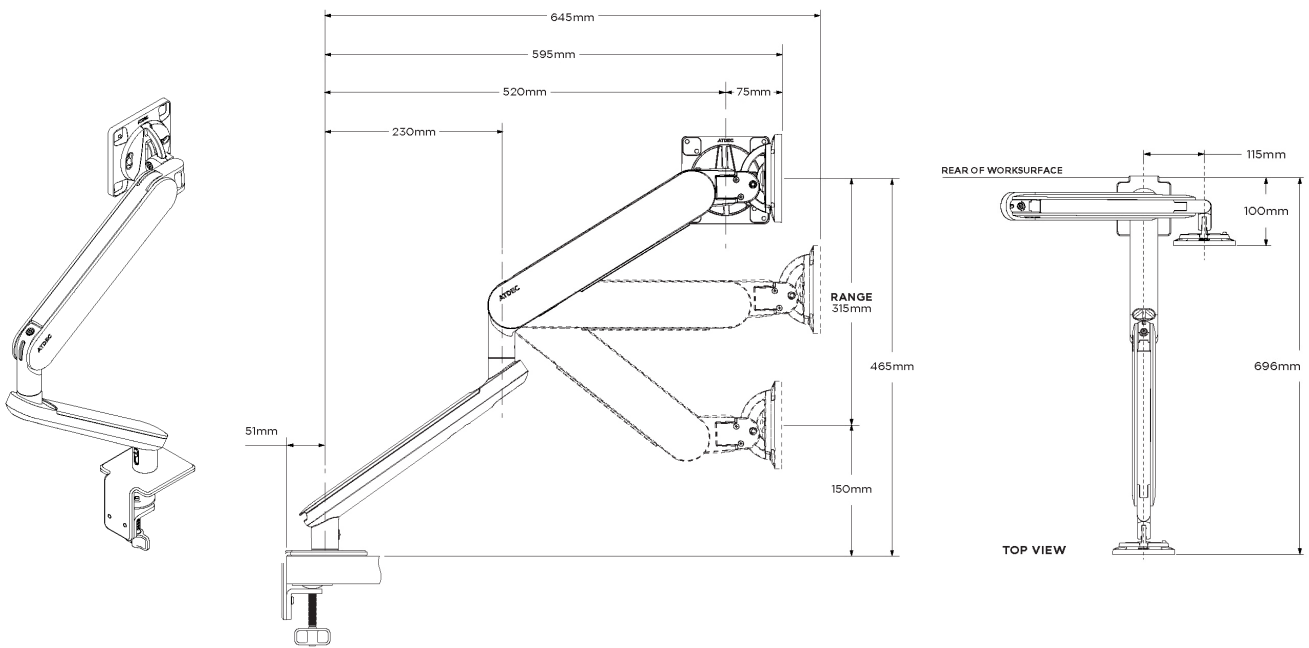
Materials Aluminium, steel, engineering polymers

Warranty 10 Years

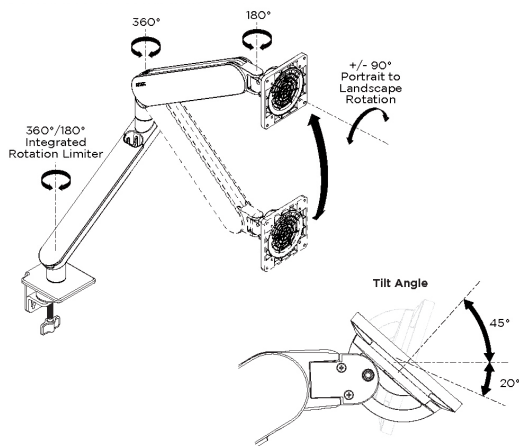
Lead time In stock (Check availability)

Product specifications.

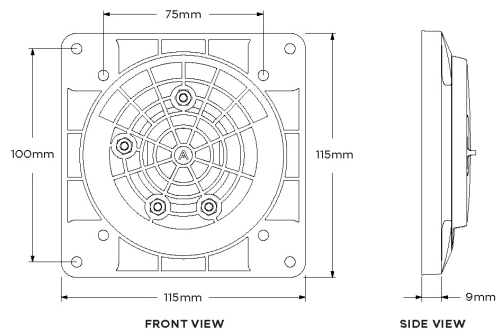
Ora F-clamp



Movement

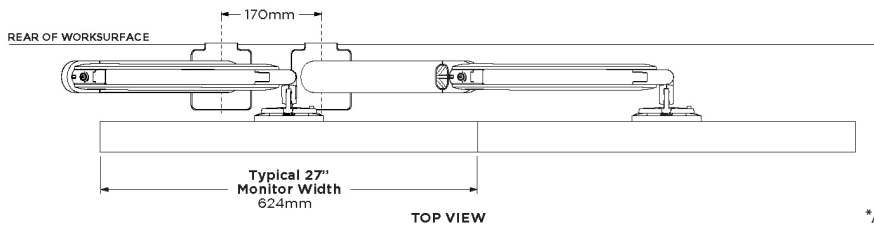


VESA head



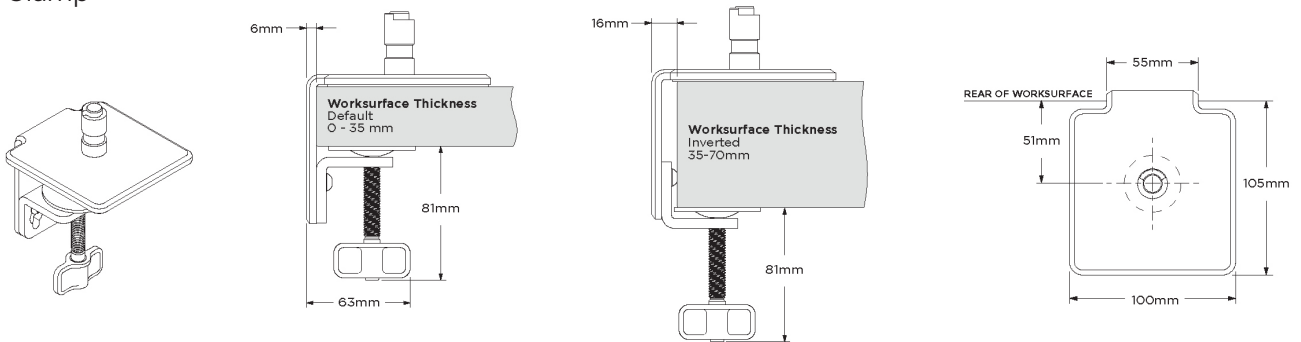
Product specifications.

Dual displays - Indicative positioning

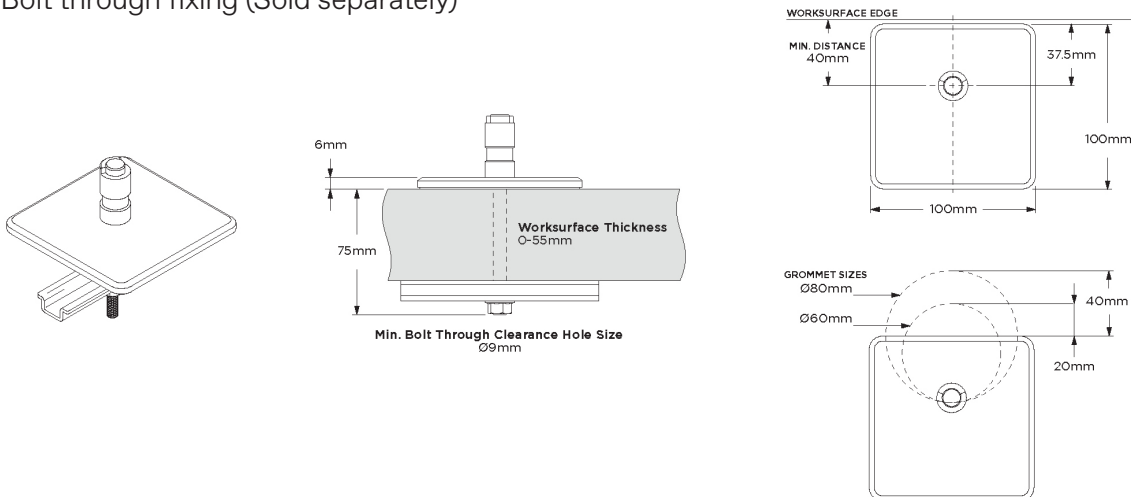


*Arms must be purchased separately.

Clamp

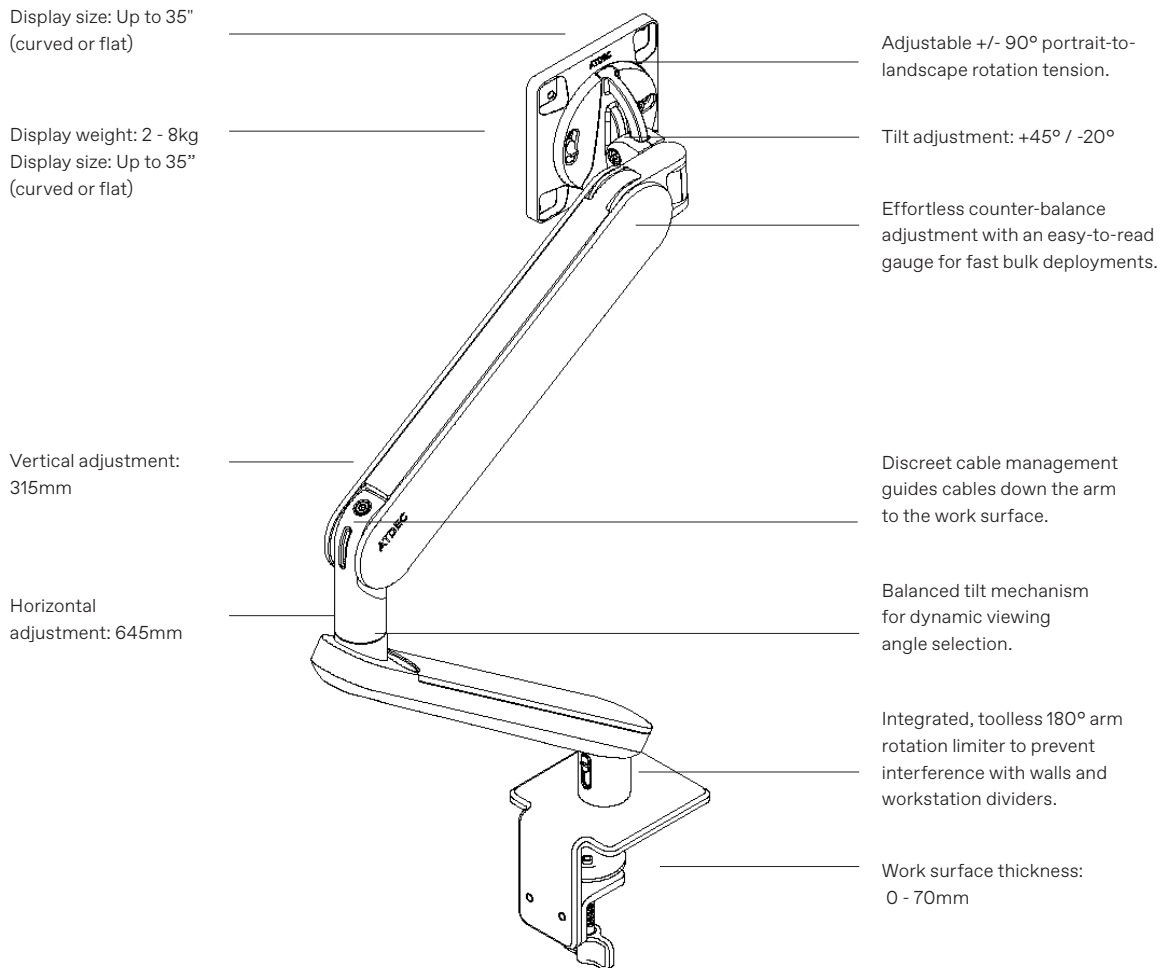


Bolt through fixing (Sold separately)



Product features.

Ora F-clamp



*Deep devices (such as all-in-one PCs) and offset VESA locations exert additional leverage that can exceed the capacity of the mount, even though the monitor weight may be within the stated range. Please contact Aspect if you would like further information.

* Larger monitors within the weight capacity may be compatible. Please contact Aspect for advice.



We are creative problem solvers that champion original thinking. We love sharing ideas, taking something and making it better together.

Please get in touch with us, we'd love to discuss your project.

New Zealand
0800 323 220
info@aspectfurniture.com

Australia
1800 696 334
infoau@aspectfurniture.com

aspectfurniture.com