

Dixon.



connubia

Dixon by Connubia is a modern, round café-style table set on a ten-sided conical pedestal base made from coated faceted sheet-metal.

Available with a wide range of base colours and tabletop finishes with contrasted edging to add some spice to your space.



Table dimensions:

Height: 760mm
Diameter: 900 / 1200mm

Tabletop edge options



Fin. Black



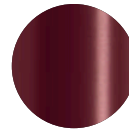
Fin. Brushed Brass



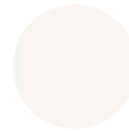
Base colour options



Met. Black

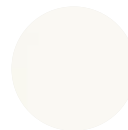


Met. Oxide Red



Met. Optic White

Tabletop finishes



Lam. HPL Matt
Optic White



Lacq. Matt
Optic White



Mel. Beton Grey



Mel. Materico White



Mal. Natural Oak



Mel. Oxide Bronze



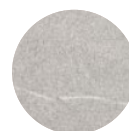
Lam. HPL Slate Grey



Mel. Termocotto



Lam. Black



Mel. Piasentina Stone



Mel. Terrazzo

